

Linux Howto's

VMWare – Using virtual floppies (118)

CIS 191 - Fall 2008

VMWare – Using virtual floppies (118)

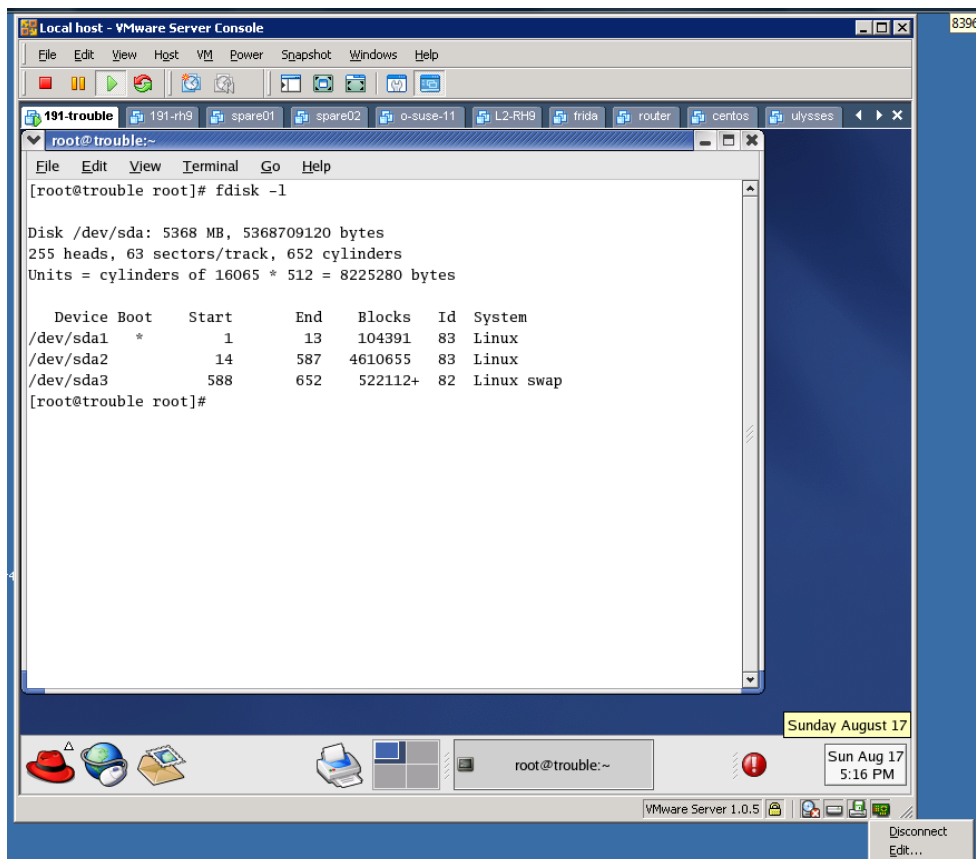
There are times when using VM's that you need to use a floppy disk. This Howto shows how to make a virtual blank floppy disk, format it, remove it, and insert it again.


Requirements:

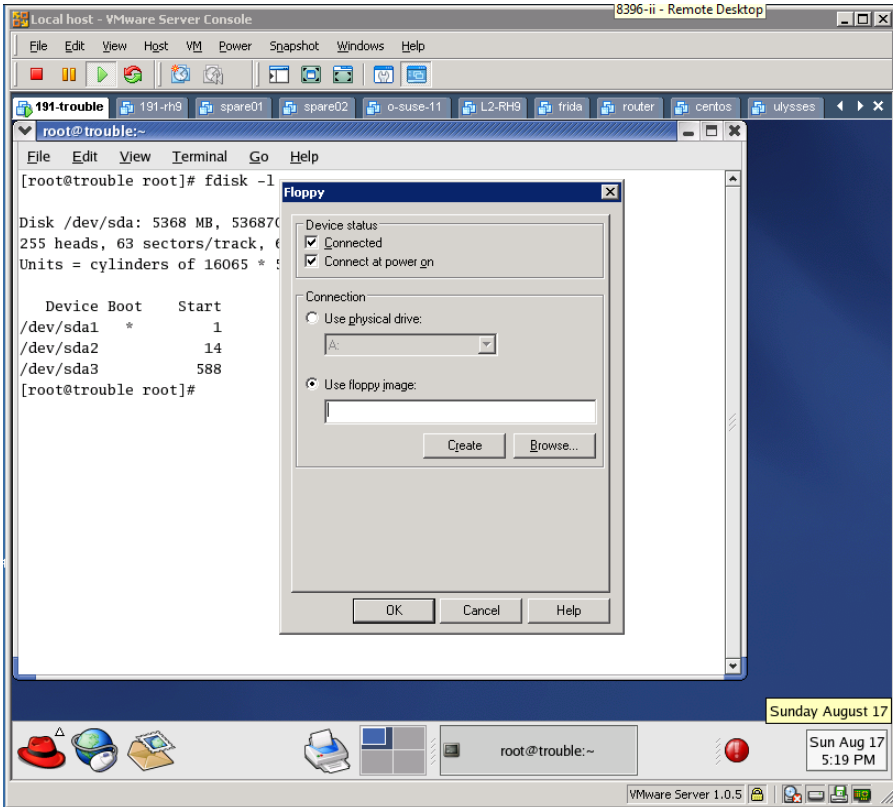
- Any VM you have created. A RH9 VM is used as an example in this Howto.
- VMWare Server 1.05 or higher
<http://www.vmware.com/products/server/>

Make a blank virtual floppy (named rescue.flp)

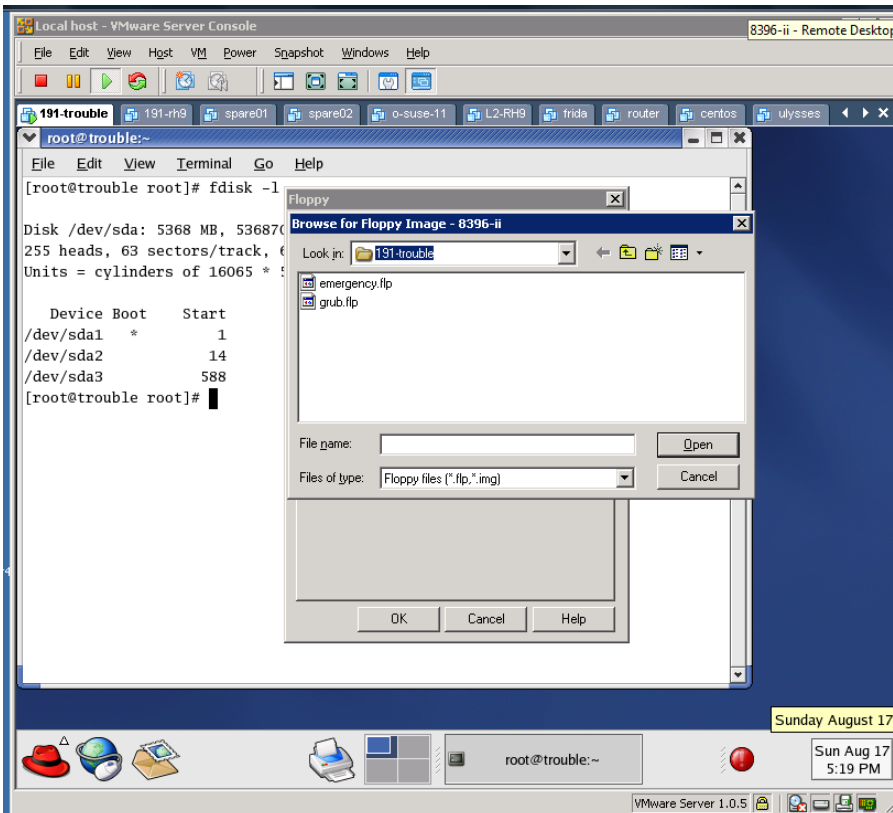
- Startup the VM



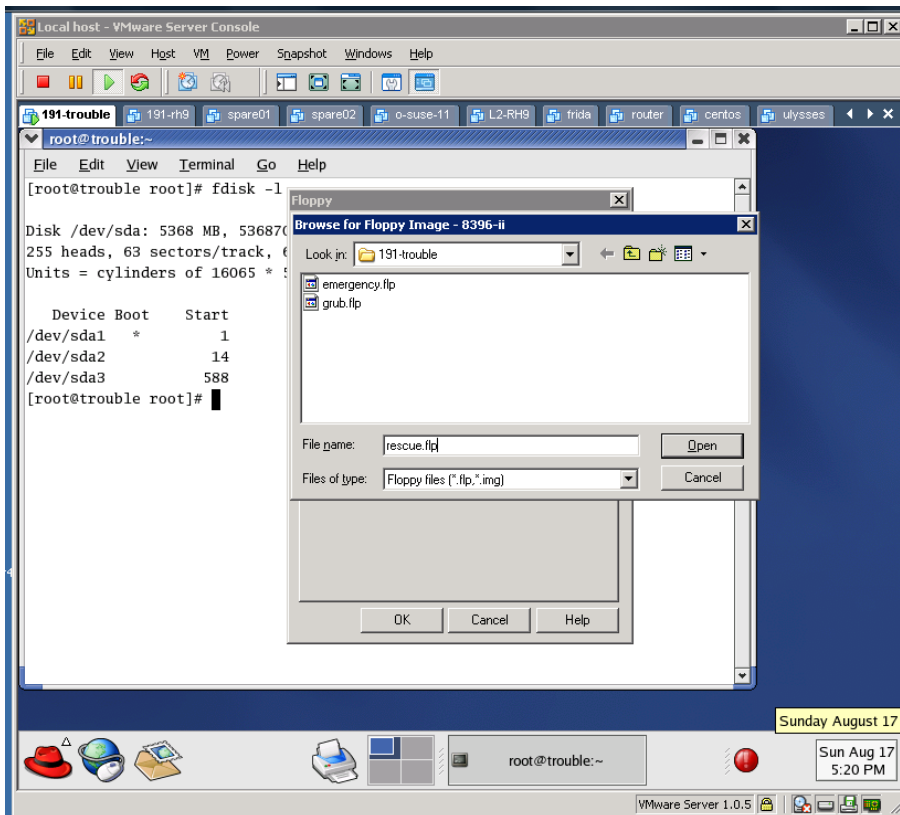
- Right click on small floppy icon in lower right of the VM window 
- On pop-up menu, select Edit...



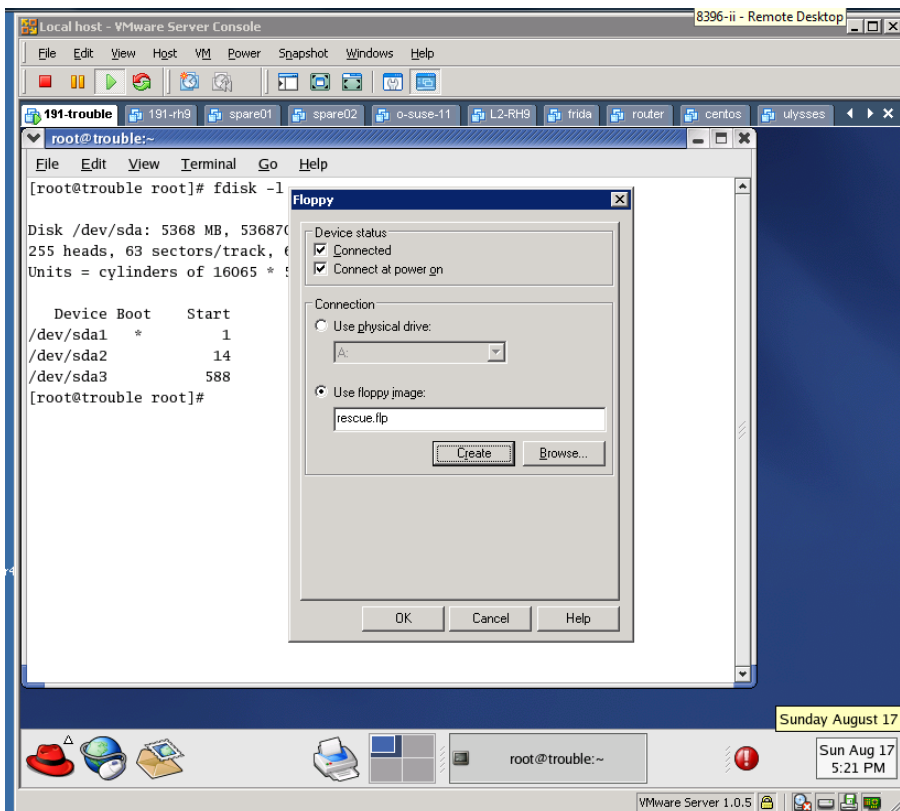
- Select Use floppy image:
- Click Create button



- Type rescue.flp into **File name** field



- Click Open



- Click OK

Format the floppy and put an ext2 file system on it.

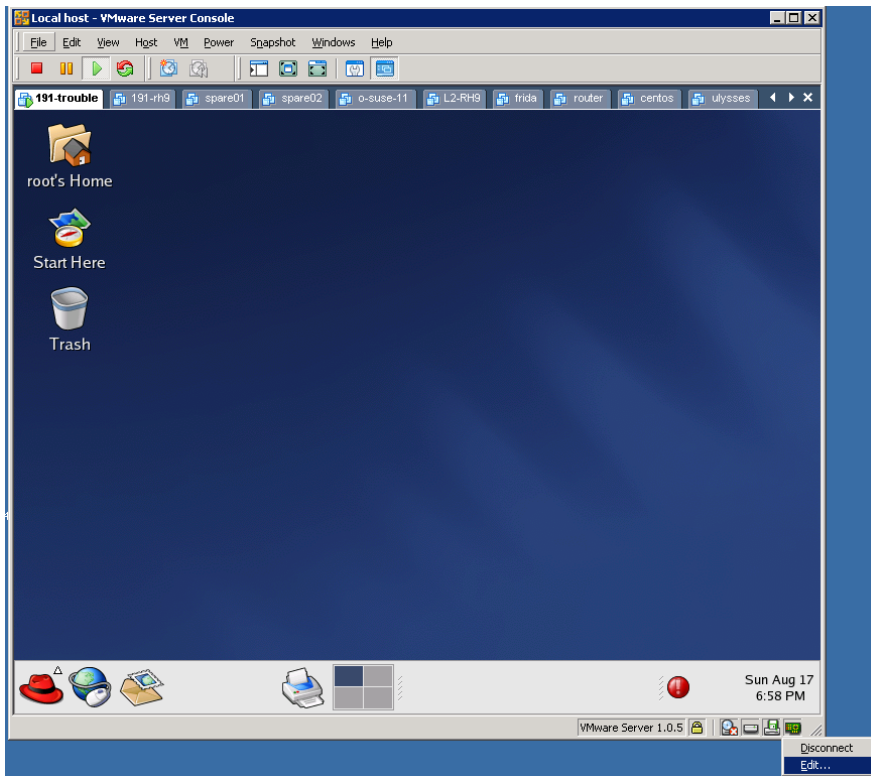
```
[root@trouble root]# fdformat /dev/fd0
Double-sided, 80 tracks, 18 sec/track. Total capacity 1440 kB.
Formatting ... done
Verifying ... done
[root@trouble root]# mkfs -t ext2 -L /rescue /dev/fd0
mke2fs 1.32 (09-Nov-2002)
Filesystem label=/rescue
OS type: Linux
Block size=1024 (log=0)
Fragment size=1024 (log=0)
184 inodes, 1440 blocks
72 blocks (5.00%) reserved for the super user
First data block=1
1 block group
8192 blocks per group, 8192 fragments per group
184 inodes per group

Writing inode tables: done
Writing superblocks and filesystem accounting information: done

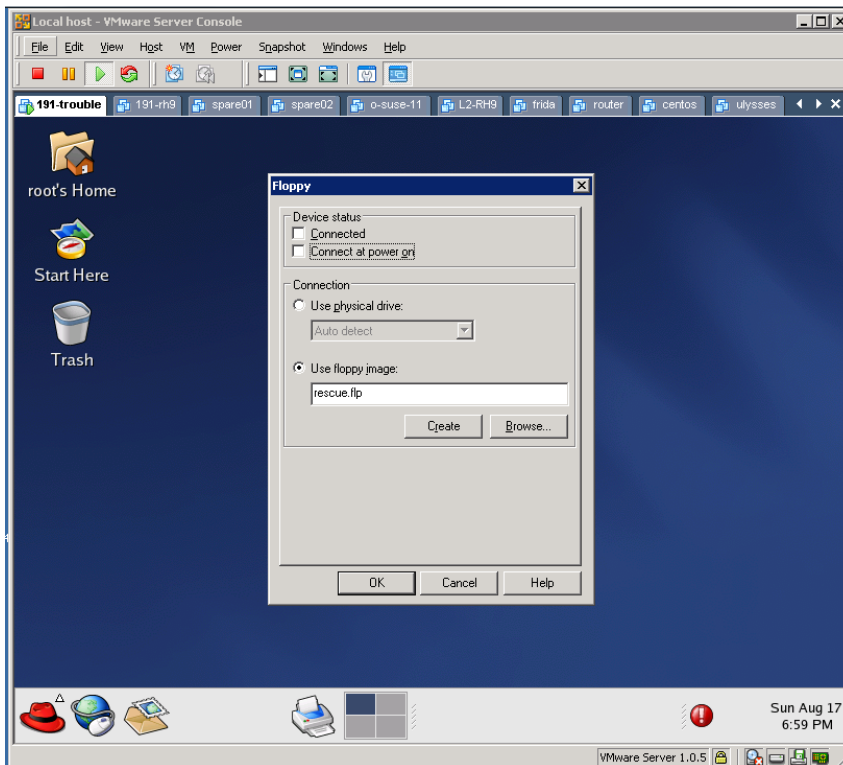
This filesystem will be automatically checked every 25 mounts or
180 days, whichever comes first.  Use tune2fs -c or -i to override.
[root@trouble root]#
```

To "Remove" the floppy from drive

- Right click on little floppy icon



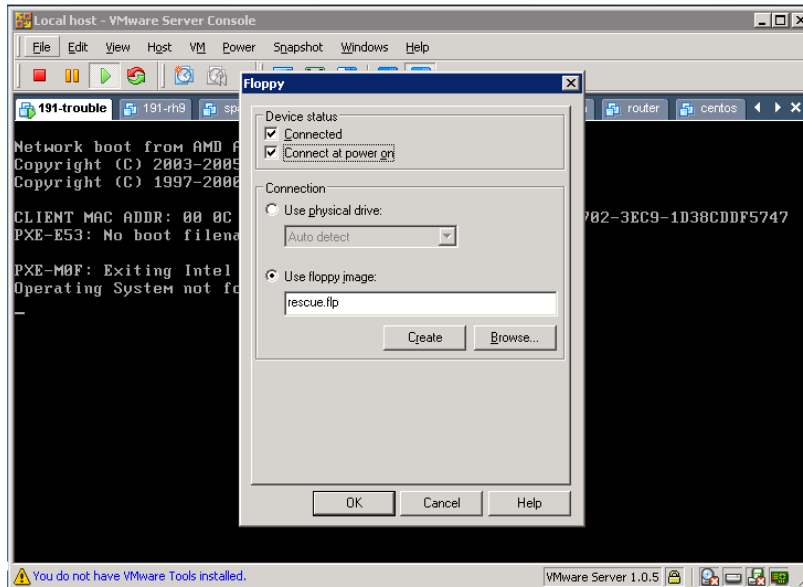
- Select Edit...



- Remove checks from **Connected** and **Connect at power on** options
- Click OK

To “insert” the floppy back into the drive

- Right click on the little floppy icon and select Edit...



- Keep the current floppy image or browse to a different one. In this example we are using rescue.flp
- Check **C**ononnected and **C**ononnect at power on
- Make sure image is still rescue.flp
- Click OK