



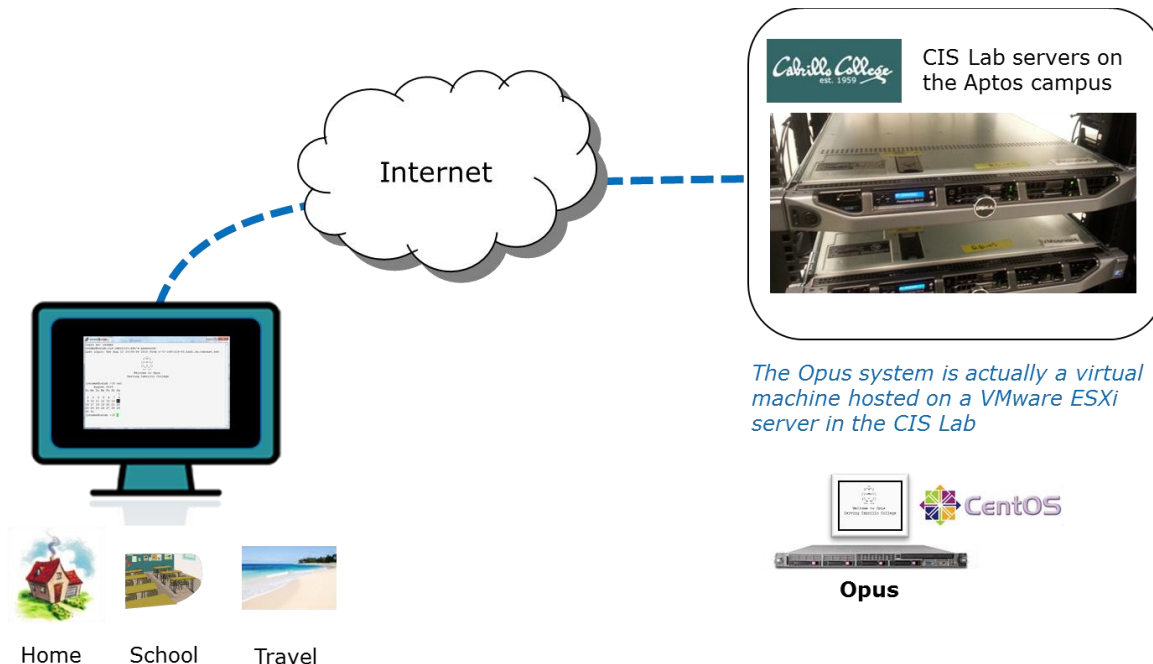
Remote Access to Opus (145)

This Howto shows how to remotely access the Opus Linux system on campus. Opus is used for doing and submitting lab assignments. You will hear this system referred to as either Opus or OSLab. Internally we use Opus. However on the Internet this system is also known as OSLab.

Supplies

- Windows PC, Linux system or Mac
- A reasonably fast Internet connection

Overview



SSH is used to access the **Opus** server. Windows doesn't include ssh so the PuTTY program must be installed. Mac and Linux users already have ssh.

Mac or Linux Users

Step 1 – Connect to Opus

Run the terminal application and issue this command using your Opus username:

```
ssh -p 2220 username@opus.cis.cabrillo.edu
```

You may get a warning like this:

```
The authenticity of host '[opus.cis.cabrillo.edu]:2220
([2607:f380:80f:f425::230]:2220)' can't be established.
RSA key fingerprint is 7d:32:80:b9:52:32:c8:dc:3b:16:0e:ba:8c:fd:79:ef.
Are you sure you want to continue connecting (yes/no)? yes
```

Type **yes** to continue.

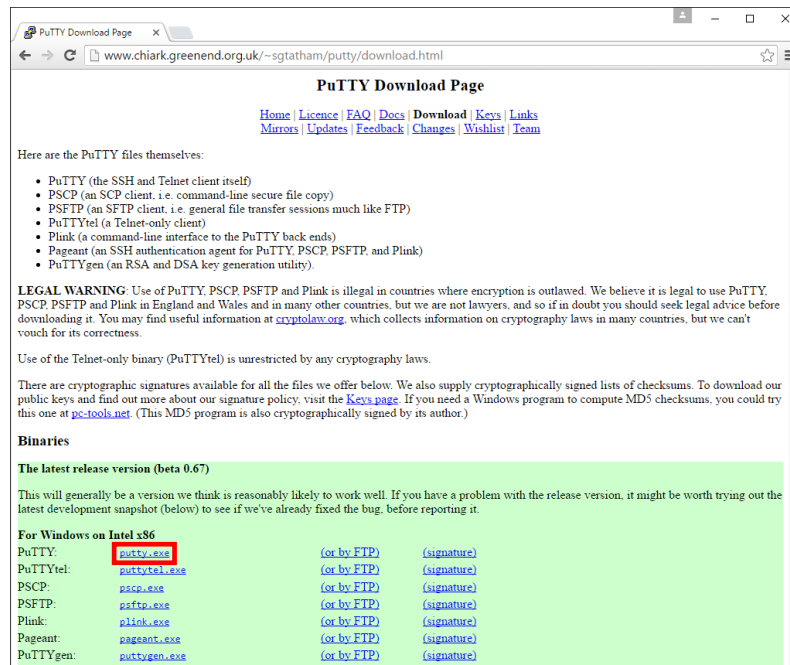
Skip the next section on Windows and go to the *Login for All Users* section below.

Windows Users

Step 1 – Download and install PuTTY

Browse to the PuTTY Download Page:

<http://www.chiark.greenend.org.uk/~sgtatham/putty/download.html>



There are two PuTTY downloads. One is the latest release version and the other is a development snapshot. Download the latest release version which is more stable.

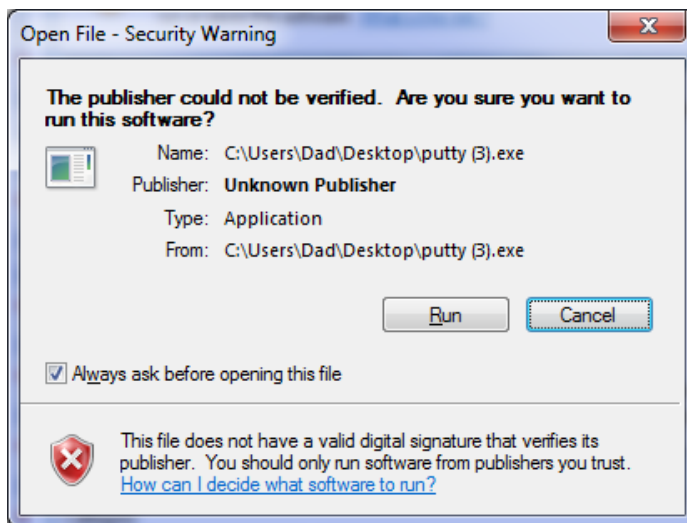
Save the downloaded file to your desktop so you can find it again.

Step 2 – Connect to Opus

Find the downloaded file and double-click it to run. If you did not save the file to the desktop you can make a shortcut (right-click on putty.exe) and drag the shortcut to the desktop or Start button.

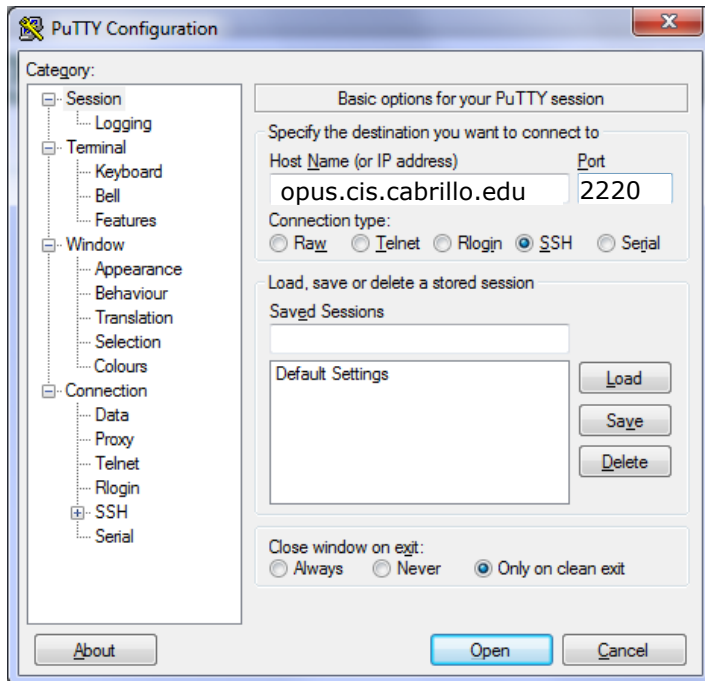


You may see this warning:



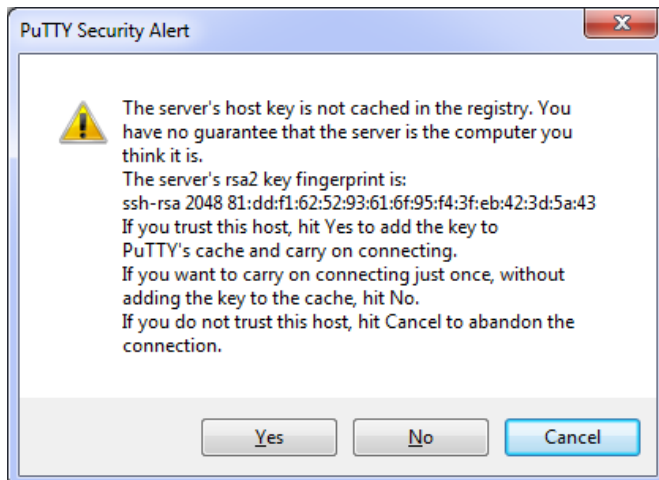
Click on Run to continue

Host Name: **opus.cis.cabrillo.edu** and Port: **2220**



Click Open to continue

You may see a warning like this:



Click Yes to continue

Login for All Users

```
simben90@opus:~  
login as: simben90  
simben90@opus.cabrillo.edu's password:  
Last login: Sun Feb 5 21:18:07 2012 from ds1174-220-66-39.dhcp.cruzio.com  
  
      ( 'v' )  
    //  --  \\  
   ( \ _ _ / )  
    ~ ~ ~ ~  
Welcome to Opus  
Serving Cabrillo College  
  
Terminal type? [xterm]   
Terminal type is xterm.  
/home/cis90/simben $ hostname  
opus.cabrillo.edu  
/home/cis90/simben $ █
```

username (if prompted)

password (not echoed)

Hit Enter key here to accept default terminal type (if prompted)

Use your own Opus username and password to login

Since Mac and Linux users already specified their usernames on the **ssh** command they will not get prompted a second time. All users will have to enter their passwords though.

CIS 90 users will be prompted for their terminal type. To accept the default just press the Enter key. CIS 76 users will not be prompted for a terminal type.

Note, you may get white text on a black background. The image above had PuTTY settings customized to show black text on an off-white background. Google: *Putty Colors* if you would like to try different Putty color settings.

When finished, type the **exit** command. This will log you off and automatically disconnect.