



Remote Access to the CIS VLab (310)

This Howto shows to remotely access the CIS 90 Arya VMs (virtual machines) in the CIS Virtual Lab (VLab). The CIS VLab was developed to remotely provide Distance Education students with online resources for doing lab assignments.

Preparation

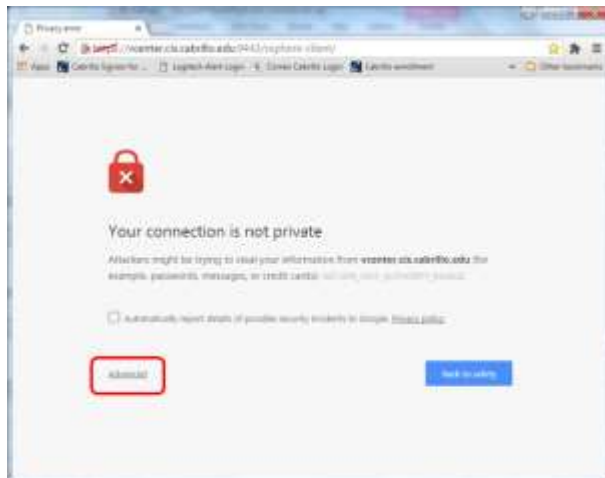
You will need login credentials (usernames and passwords) for both VLab and any VM you intend to use. See the email sent to you before the course started or the announcement in Canvas regarding login credentials.

Use the table at <http://simms-teach.com/docs/cis90/Pod-Assignments-90-sp16.pdf> to see which Arya VM has been assigned to you.

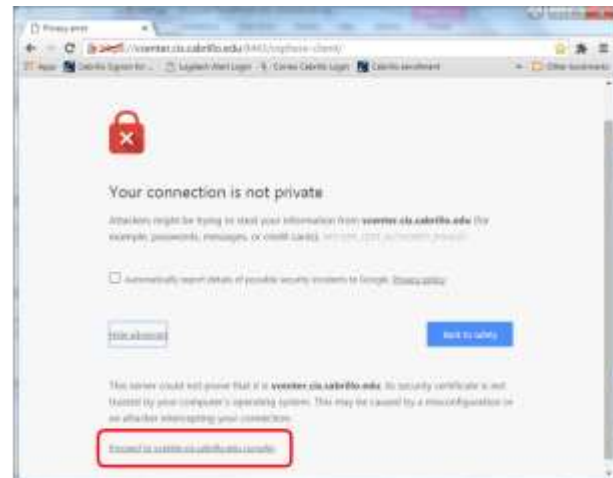
Procedure

- 1) Browse to: <https://vcenter.cis.cabrillo.edu:9443/vsphere-client/>

You may get this warning:

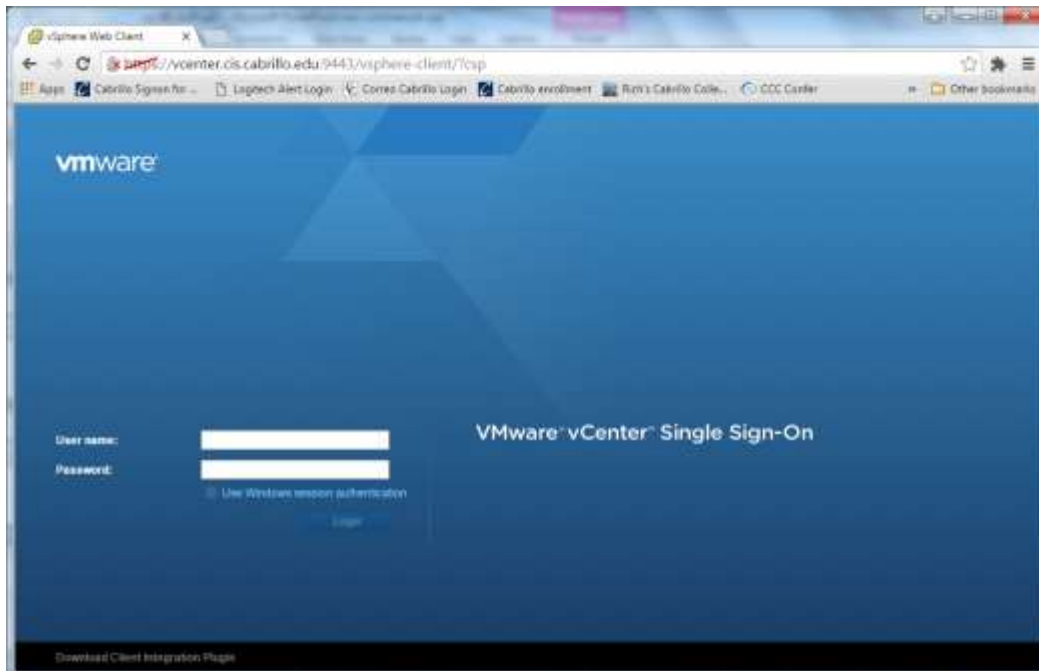


Click on Advanced



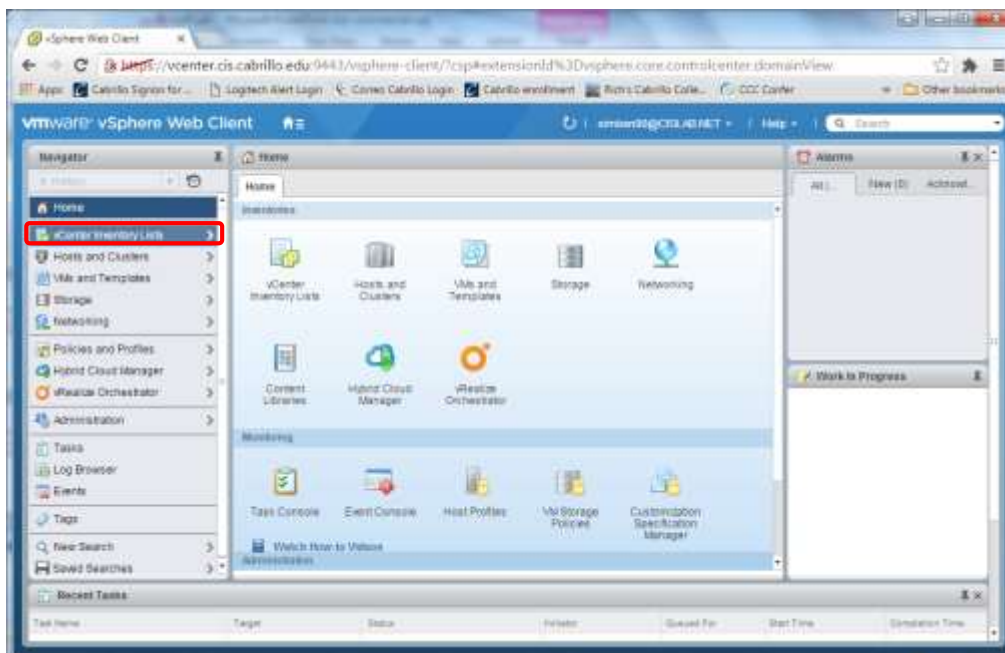
Click on Proceed to vcenter ...

2) Use your VLab credentials to login. Note your VLab username must start with **cislab**

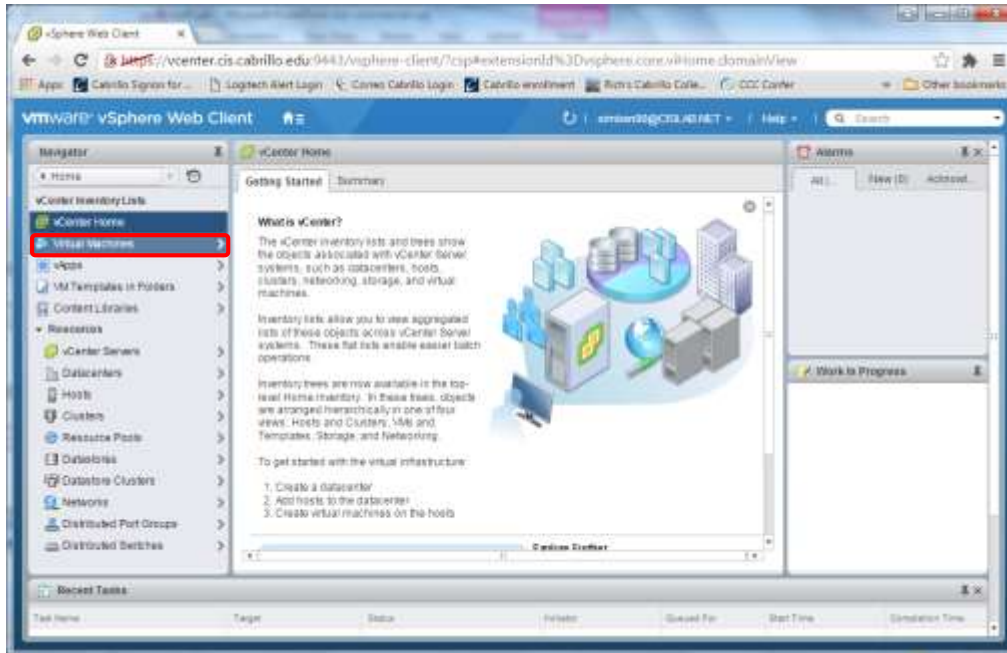


Enter your username and password

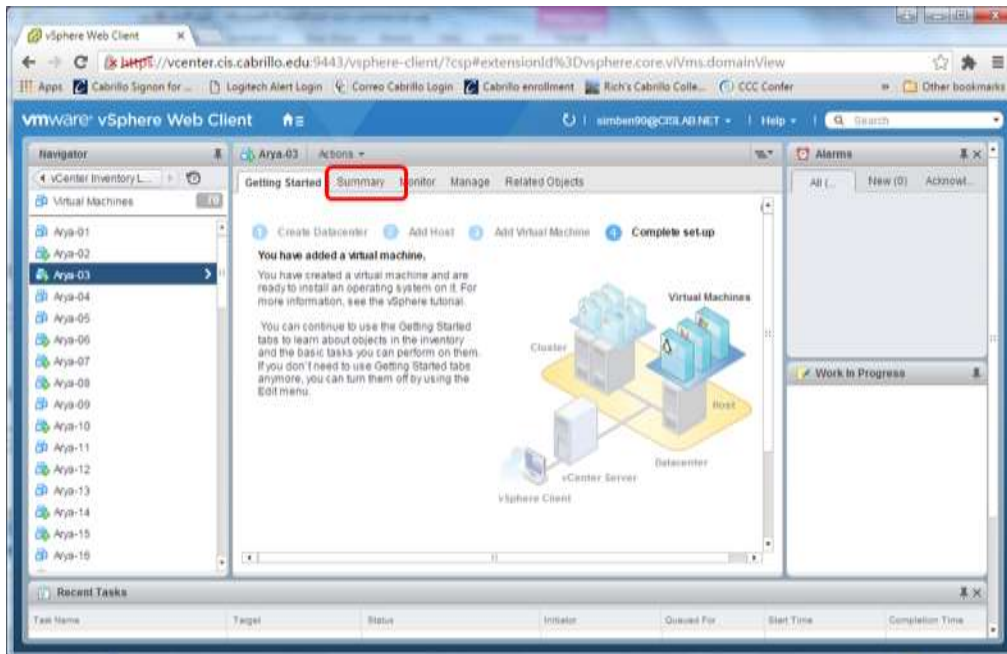
3) Navigate to your Arya VM (virtual machine).



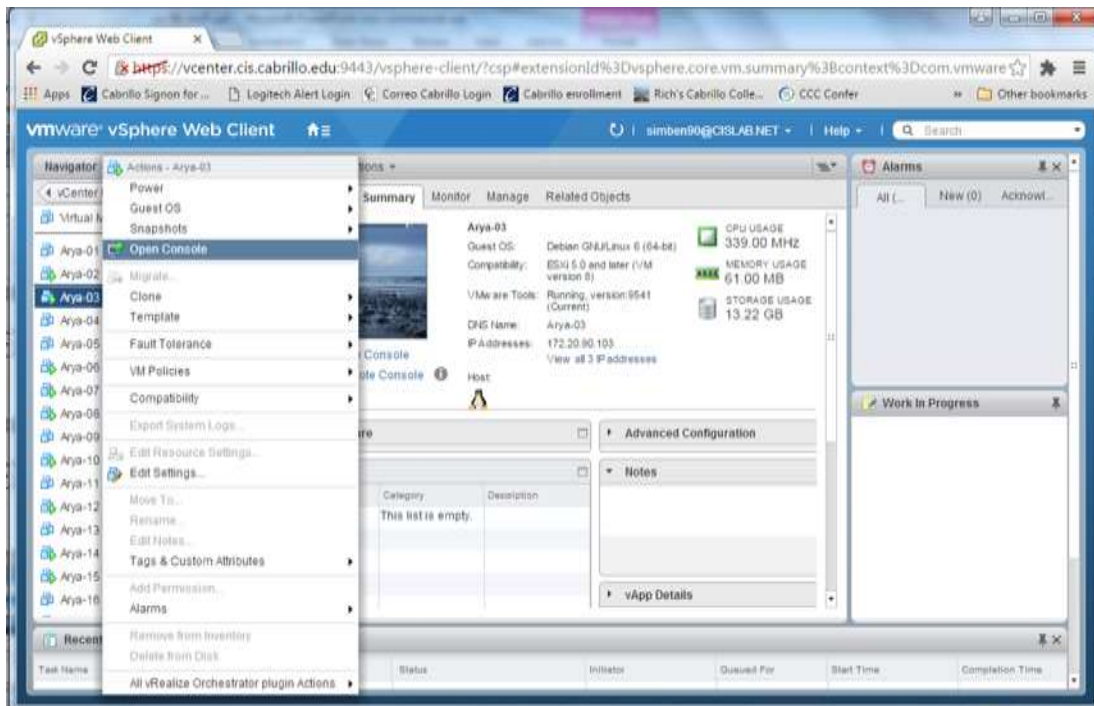
Click on vCenter Inventory Lists



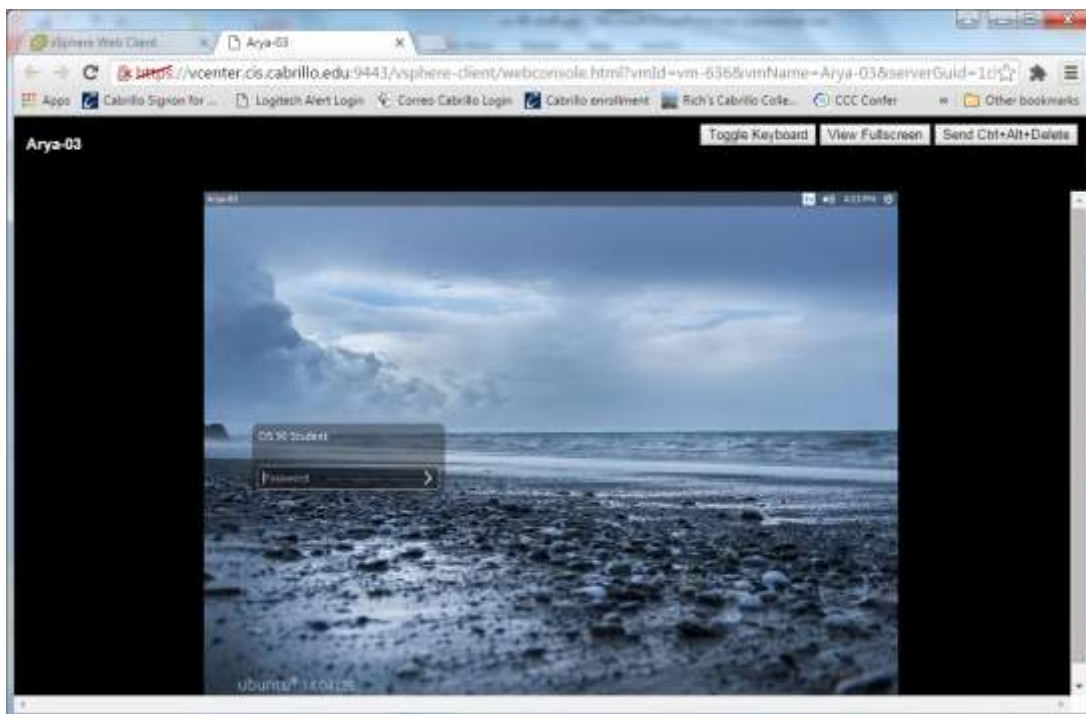
Click on Virtual Machines



Click on your VM and then the Summary tab



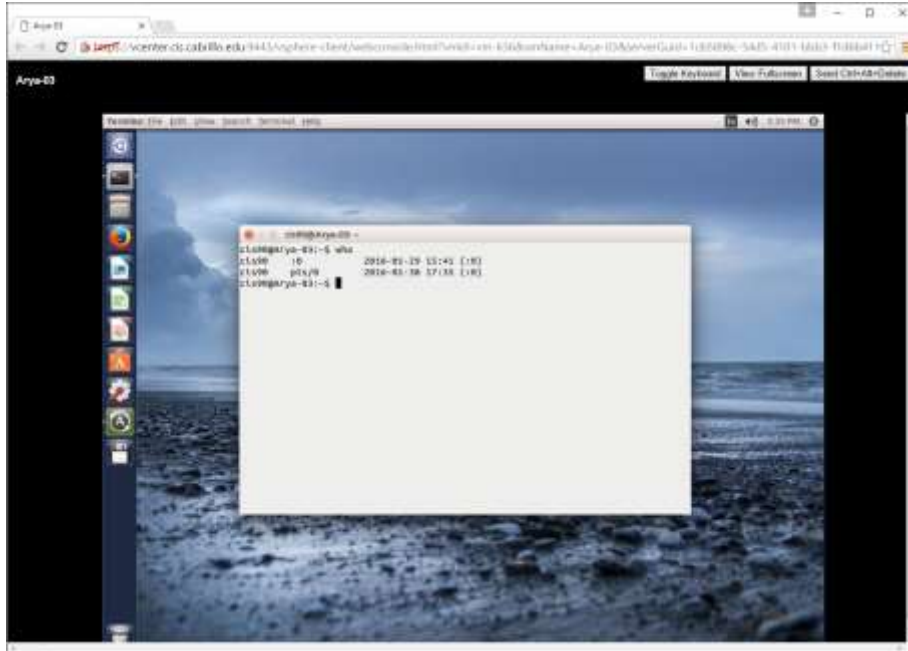
Left click your VM in the list and select open Console



Enter your Arya password to log into the VM

3) Use your Arya VM.

Feel free to use your VM at any time. If the VM is powered off you can power it back on again by right clicking on the name and selecting Power > Power On.

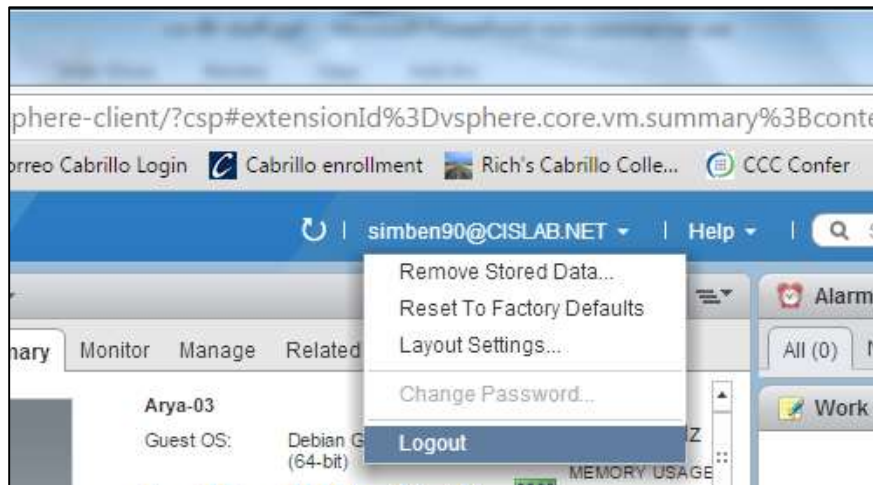


The Arya VM opened in separate console (and browser tab)

Some tips for using VMs:

- Hold down the Ctrl and Alt keys to release the mouse from a VM.
- While holding down the Ctrl, Windows and Alt keys tap the space bar, then F1-F7 to select a virtual terminal (tty1 to tty7).

4) Disconnect from VLab



Right-click on your login name and select Logout